

## Introduction

### Welcome to Ergotechnics

At Ergotechnics we have the technical know-how within the design team to allow us to deliver on complex and/or fast track projects. With experience extensively developed from our Shopfitting roots we embrace the very latest methods of design, presentation, and construction to bring the initial brief to an approved buildable conclusion.

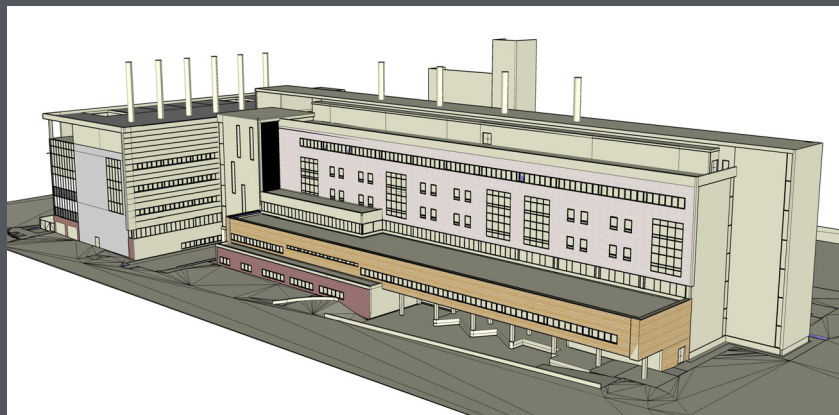
Ergotechnics Ltd continues at all times to take into account our client's confidentiality. We are always sensitive to our client's expectations, working diligently and respectfully to enhance our client's reputation.



### Profile

As an established resource for Contractors, Architects, Designers, Shopfitters, and Joinery manufacturers we have been included within the procurement of many specialist fit outs and construction projects. Our practical knowledge of the many specialist fields that traditionally fall under the remit of a Shopfitting Company, combined with the requirement to produce most of the contract off site for a swift build / fit out, has enabled us to build a prime reputation. We have developed this technical know-how further through the introduction of essential software and drawing production tools that now see us at the forefront of software development.

Stringent QA procedures and the regularity of our training programmes over the past 10 years have meant that our highly qualified team provide deliverables to Architects and Engineers on major PFI projects. Ergotechnics not only provide the impressive technical backup to develop design intent into full contract issue drawings, but will



provide all necessary resource to deliver the full drawing package whether for Tender or Construction issue.

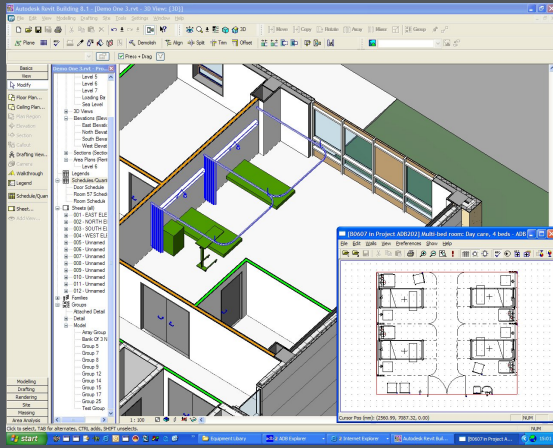
Established, reliable, and efficient - Ergotechnics Ltd has a track record that has encouraged us to expand further into: Timber frame building design; Prefabricated Housing; Building Regulations part L & M specialist consultants; and overseas resources. These services are being developed further to enable Ergotechnics to become the most formidable UK outsource.

### Architectural collaboration

Ergotechnics has grown to incorporate an ever expanding range of Architectural services to many Practices. After originally extending our technical services to include Architects, Ergotechnics now collaborates on projects that include parametric 3D modelling, production and quality assessment of full deliverable packages, and on large PFI projects including direct coordination with clients and other disciplines when asked.

By using Building Information Modelling (BIM) software Ergotechnics has become a unique and integral part of the teams of several practices. By introducing the latest software Ergotechnics are able to quickly and efficiently produce fully parametric, accurate models, incorporating the ability to edit and reissue drawings faster than ever.

## Healthcare & Medical Planning



Ergotechnics' resourceful use of both Bentley Architecture (TriForma) and Revit on PFI projects over the past six years has been enhanced further by the synchronisation of the architectural elements as they evolve, with ADB and CodeBook databases. As the design and engineering of these buildings that have a strict brief are considered, we are able to assist the Architect in analysing both graphically and through schedules to the extent to which the design is fulfilling the brief.

Partitions; Doors and Glazed Screens; Ceilings; Floor Finishes; Fitting Out; External Envelope, are elements that we take on as full task deliverables.

As part of our visionary approach we would like to include medical planning into the Ergotechnics' BIM.

1 Elevation 1 - a  
1:50

2 Elevation 1 - b  
1:50

3 Elevation 1 - c  
1:50

4 Elevation 1 - d  
1:50

6 3D View 11

7 3D View 1

5 Room 57  
1:50

Surface Finish (HTM 56):  
4: Impervious, smooth  
Moisture Resistance (HTM 56): H-High humidity,  
Cleaning Routine (HTM 56): To manufacturers recommendations

Surface Finish (HTM 56): 5  
Moisture Resistance (HTM 56): N-Low Normal  
Humidity, Cleaning Routine (HTM 56): To manufacturers recommendations

**Room 57 Equipment Schedule**

ADB Code	Count	Description	ADB Group
BED019	4		03
CHA017	6		02
DIS026	1	DISPENSER, dispensation solution Med. Alcohol Gel, lever action, wall mounted	02
DIS026	1	DISPENSER, soap, lever action, wall mounted	02
HL006	1	HOLDER, coat, with 16 front panel, stainless steel, heavy-duty	02
LOG063	4	LUMINAIRE Reading, adjustable arm, 100watt wall track light mounted	02
LOC063	4	LOCKER, wardrobe bedside, 1000x500x500	02
RPO013	4	RECHARGED SERVICES TRAYING SYSTEM, electrical power, 340x600 nominal	03
TAB075	4	TABLE, Overhead, cantilevered	03
TRAY12	2	TRAY, curtain, 1000x400, Longpad, covered, 2000L, 2000W	03
TRAY13	2	TRAY, curtain, 1000x400, Longpad, covered, 2000L, 2000W	03
WAS107	1	TRAP, bottle, 300mm, HTM56	02
WAS110	1	WASH, medical, hospital purpose, vitreous china, no tap holes, no overflow, concealed waste, 500W, 400D, HTM6ALBHM	02

0870 766 9368 | 0870 766 9370  
 15 hallingbury@ergotech.com | www.ergotech.com

**Ergotechnics Ltd**

**C-Sheet Room 57  
Level 5**

003 19 011

Drawn by: JAS  
 Checked by: JAS  
 Date: 11/20  
 Scale: 1:50